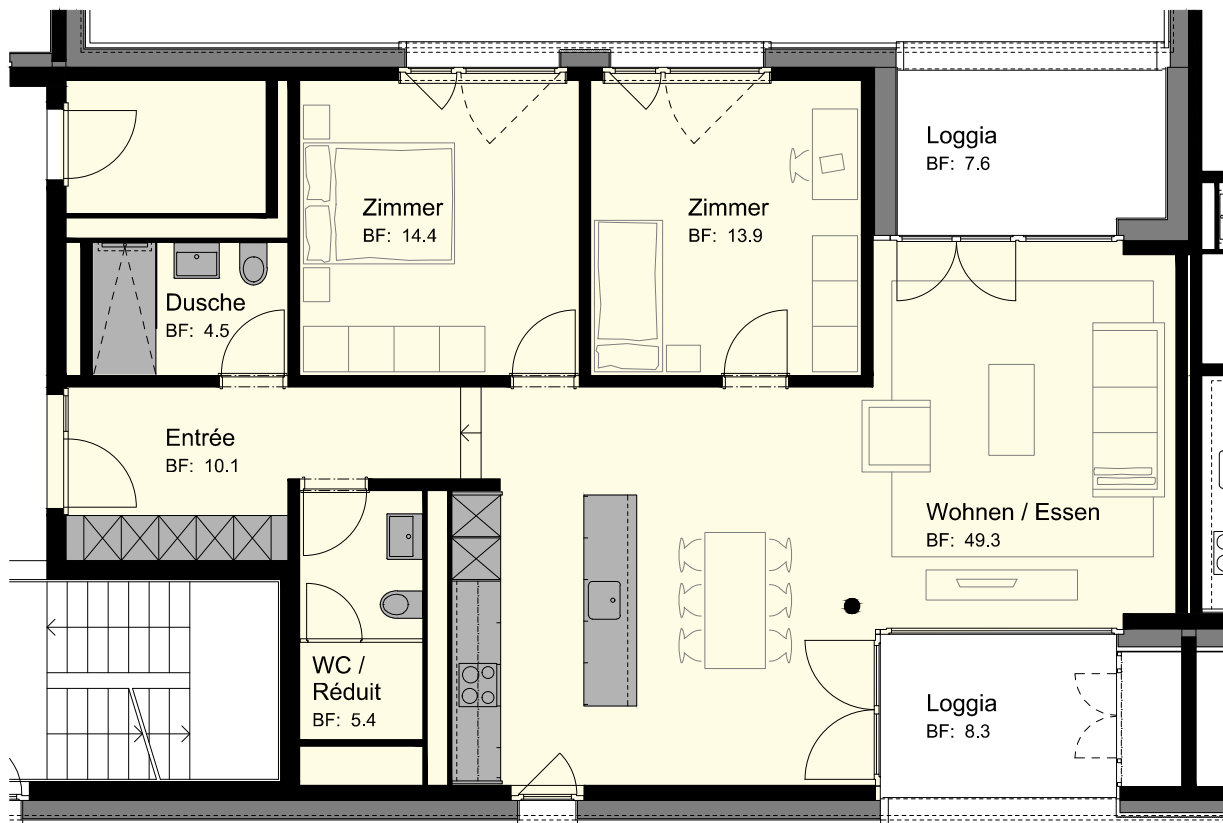
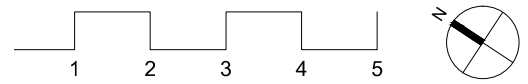
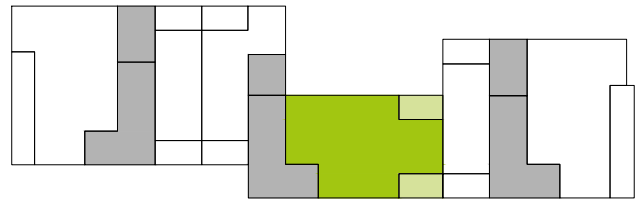


Wohnung 6001

Bezug ab	01.11.2017
Etage	EG links
Zimmer	3.5
Fläche m ²	97.6
Nettomietzins CHF	1'510.00
Nebenkosten CHF	90.00
Anteilscheinkapital CHF	6'500.00
Einstellplätze CHF	140.00



Änderungen vorbehalten.